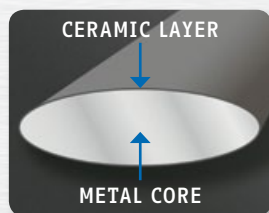




Top-Ceramic-Collection

Ceramic coated Sharpening Steels

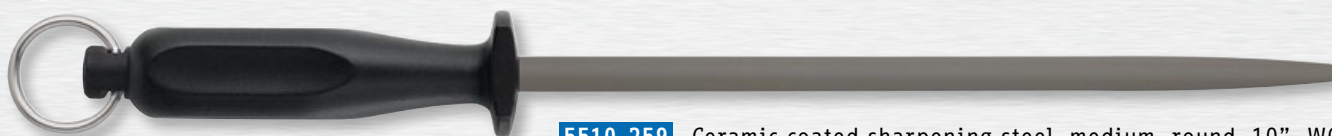


Unbreakable due to a solid metal core and **wear resistant** due to an extra hard ceramic surface. The extremely high-grade coating is achieved by high temperature flame spraying treatment. Due to their extra hard ceramic surface these sharpening steels are specially suited for harder/more wear resistant knives.

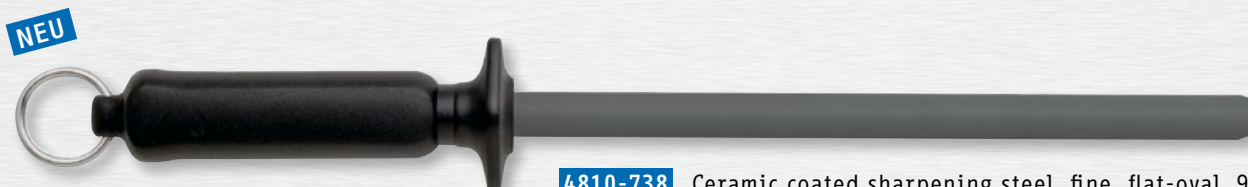
Available in two surface finishings: **fine** chromium-oxide (final digit 8)
medium tungsten-carbide (final digit 9)



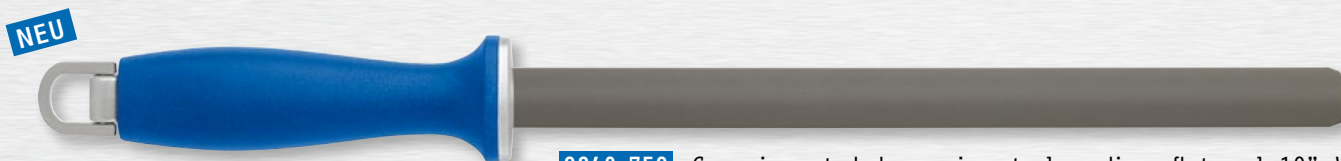
4823-238 Ceramic coated sharpening steel, fine, round, 9", CO



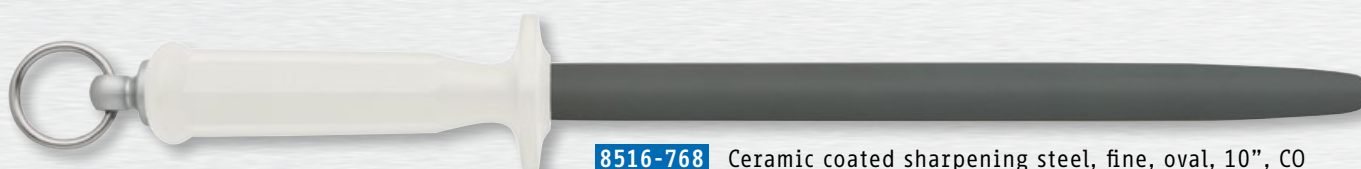
5510-259 Ceramic coated sharpening steel, medium, round, 10", WO



4810-738 Ceramic coated sharpening steel, fine, flat-oval, 9", CO



9840-759 Ceramic coated sharpening steel, medium, flat-oval, 10", WO



8516-768 Ceramic coated sharpening steel, fine, oval, 10", CO



8625-819 Ceramic coated sharpening steel, medium, oval, 12", WO

available in more colors, lengths and handle versions upon request